



INSTALLATION INSTRUCTIONS
LINCOLN LS (2000-2002)
FORD THUNDERBIRD (2000-2003)
See other side for LINCOLN LS (2003)

PART NUMBER: LC-53-00

**VIEW INSTRUCTIONS & UPDATES
 ONLINE @
 WWW.PRO-FIT-INTL.COM**

PLEASE READ COMPLETE INSTRUCTIONS BEFORE INSTALLING THIS Pro.Fit VSM™ .
 All instructions assume a drivers seat vantage point. Caution is advised when removing and reassembling wood or plastic parts of a dash. Applying unnecessary force or pressure may cause a piece to crack or break.

Pro.Fit logo and part number will be right side up and readable when installed.

TOOLS REQUIRED: #2 Phillips screwdriver, hook tool, 9/32" & 5/16" sockets & driver, telescopic magnet, 5/64" drill bit and drill, protective cloth, marking pen.

PARTS INCLUDED: Pro.Fit VSM™ , instructions, two (2) # 10x 5/8" screws.

LOCATION: To the right of the radio.

STEP 1. Begin by removing the simulated wood grain bezel that surrounds the ashtray. Insert the hook tool behind the upper right corner of the bezel just below the climate control. Pull toward you to release the right clip. Perform this same action in the upper left corner. Set the bezel aside. Using the 9/32" socket and driver remove the two screws that hold the ashtray module in place. Set the screws aside. Grasp the ashtray module and carefully pull it out of its cavity just enough to gain access to two 5/16" hex head screws that hold the radio and climate control unit in place. Using the 5/16" socket and driver and a telescopic magnet remove the two screws that hold bottom section of the radio and climate control unit. **NOTE: Use the telescopic magnet to make sure the screws do not fall behind the dash.** Set the screws aside.



STEP 2. Insert the hook tool behind the lower right corner of the air duct module just above the radio. Carefully pull toward you to release the lower right clip that holds the duct in place. Perform this action in the lower left corner of the duct to remove the lower left clip. Grasp the air duct and pull it out of its cavity and set it on top of the dash. **Do not disconnect any wiring.** Locate and remove the four (4) hex head screws that hold the radio and climate control in place. Set the screws aside. Place the protective cloth over the top of the center console. Grasp the radio and climate control module and pull it out of its cavity. Set the module onto the center console. **Do not disconnect any wiring to the radio.** Locate a flat section of plastic to the right of the radio cavity. This section has a hole in it for the radio and climate control module centering pin. Place the center hole in the Pro.Fit VSM™ over the centering pin hole on the dash. Using the marking pen and the remaining two holes in the Pro.Fit VSM™ as guides, mark the two spots for pilot holes. Set the VSM aside.



STEP 3. Using the 5/64" drill bit and drill, **carefully** drill two pilot holes. Place the Pro.Fit VSM™ over the pilot holes. Insert the two provided screws and tighten.



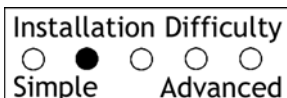
STEP 4. Re-install the dash in reverse order securing all clips and screws. Install the phone holder onto the Pro.Fit VSM™ .

This completes the installation of your Pro.Fit VSM™ .

Pro.Fit International, Inc.® may not be held liable for any damage to a vehicle before, during or after the installation or removal of this Pro.Fit VSM™ . Pro.Fit may not be held liable for any personal injury resulting from accident or improper installation.

Pro.Fit International, Inc.® 1335 Eagandale Court, Eagan, MN 55121, Ph: 651-688-3588 or 800-388-0073 Fx: 651-688-9876

Web Address: www.pro-fit-intl.com



© Pro.Fit International, Eagan, MN 2003



INSTALLATION INSTRUCTIONS

LINCOLN LS (2003)

See other side for LINCOLN LS (2000-2003), FORD THUNDERBIRD (2000-2003)

PART NUMBER: LC-53-00

VIEW INSTRUCTIONS & UPDATES
ONLINE @
WWW.PRO-FIT-INTL.COM

PLEASE READ COMPLETE INSTRUCTIONS BEFORE INSTALLING THIS Pro.Fit VSM™ .
All instructions assume a drivers seat vantage point. Caution is advised when removing and reassembling wood or plastic parts of a dash. Applying unnecessary force or pressure may cause a piece to crack or break.

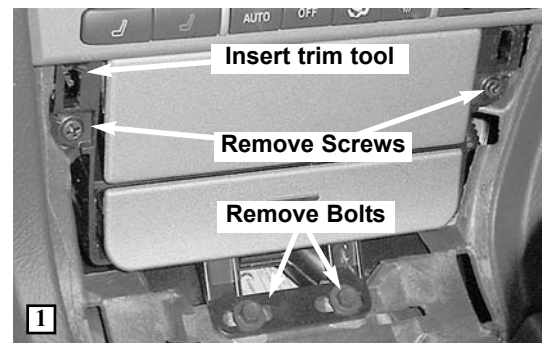
Pro.Fit logo and part number will be right side up and readable when installed.

TOOLS REQUIRED: Phillips screwdriver, 7mm & 8mm nut driver, Dash Trim Removal Tool, 5/64" drill bit and drill, marking pen.

PARTS INCLUDED: Pro.Fit VSM , instructions, two (2) # 10x 5/8" screws.

LOCATION: To the right of the radio.

STEP 1. Apply emergency brake. Place gear shift into neutral. Insert the dash trim removal tool behind the upper-left corner of the trim bezel that surrounds the gear shift and ashtray module. **Photo # 1.** Pry outward to release a retaining clip. Work the tool towards the back of the bezel to release a total of three (3) clips on the left side. Repeat the process on the right side, starting at the top. Lift bezel over gear shift and set aside.



STEP 2. Remove the screws on either side of the ashtray. Remove the two (2) 7 mm bolts below the ash tray. **Photo # 1.** Pull the ashtray module out of the dash and set aside. Remove the four (4) bolts that hold the radio / climate control module in place. There are two (2) bolts on top and bottom. Slide the radio out of its holder and let hang down. **Do not disconnect any wiring to the radio!!**



STEP 3. Locate a flat section of plastic to the right of the radio cavity. This section has a hole in it for the radio / climate control module centering pin. Place the center hole in the VSM over the centering pin hole on the dash. **Photo # 2.** Using the remaining two holes in the VSM as guides, mark the two spots for pilot holes. Set the VSM aside. Using the 5/64" drill bit and drill, **carefully** drill two pilot holes. Place the VSM over the pilot holes. Insert the two provided screws and tighten.



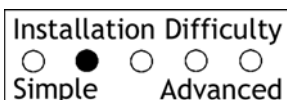
STEP 4. Re-install the dash in reverse order securing all clips and screws.

This completes the installation of your Pro.Fit VSM .

Pro.Fit International, Inc.® may not be held liable for any damage to a vehicle before, during or after the installation or removal of this Pro.Fit VSM™ . Pro.Fit may not be held liable for any personal injury resulting from accident or improper installation.

Pro.Fit International, Inc.® 1335 Eagandale Court, Eagan, MN 55121, Ph: 651-688-3588 or 800-388-0073 Fx: 651-688-9876

Web Address: www.pro-fit-intl.com



© Pro.Fit International, Eagan, MN 2003